



Introduction to BR Space Software

Miroslav Ćosić

Head, Space Application Software, BR/IAP
International Telecommunication Union

BR Space Software



Why?

- Purpose of BR Software

What's in it for you?

- How can BR Software help you?

Where to get it?

- From where to download BR Software?

Coming soon...

- The future of BR Software & Databases

BR Space Software



Why?

- Purpose of BR Software

What's in it for you?

- How can BR Software help you?

Where to get it?

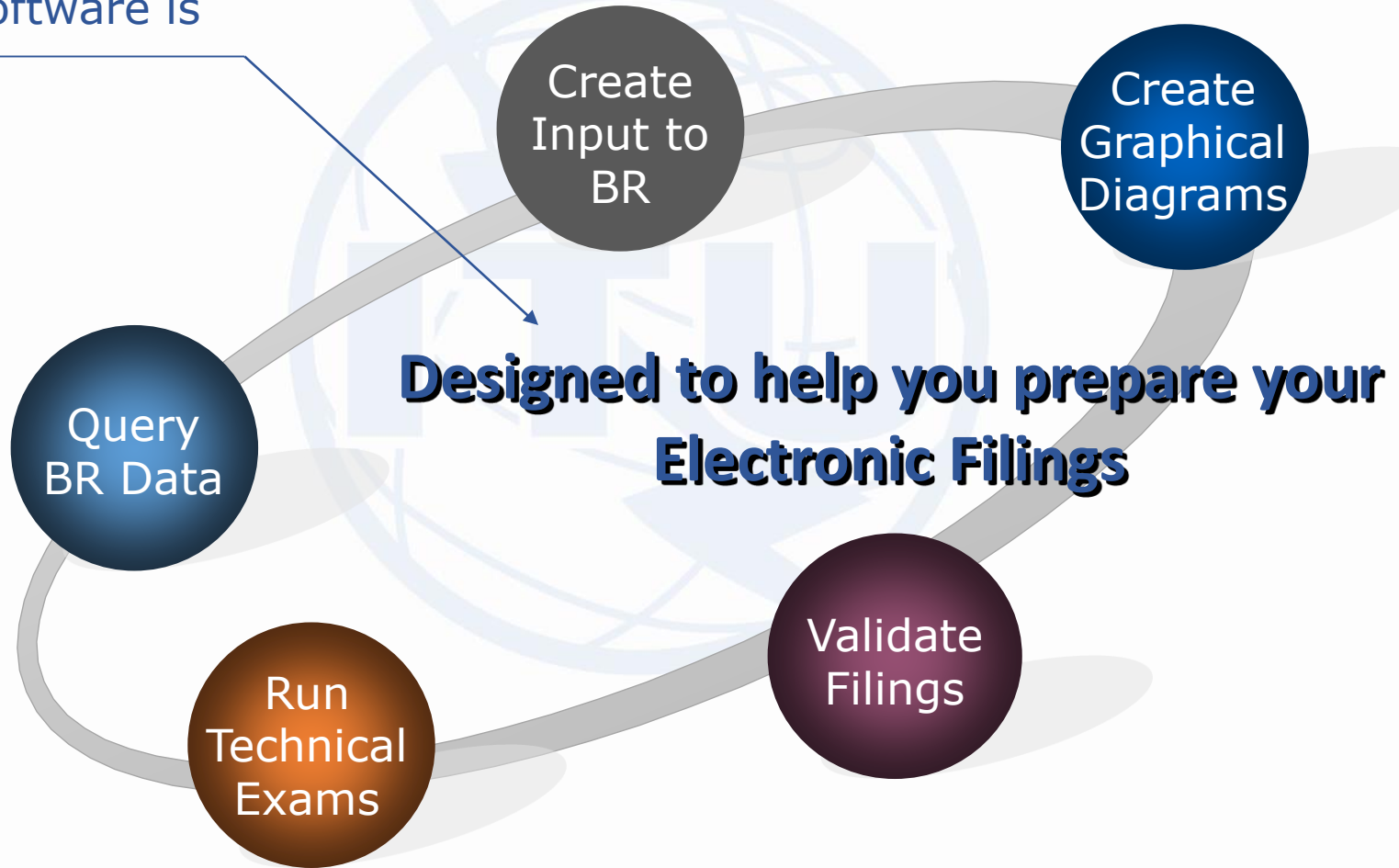
- From where to download BR Software?

Coming soon...

- The future of BR Software & Databases

Purpose of BR Software

BR Software is



BR Space Software



Why?

- Purpose of BR Software

What's in it for you?

- How can BR Software help you?

Where to get it?

- From where to download BR Software?

Coming soon...

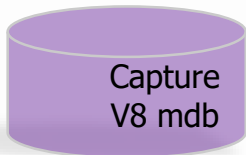
- The future of BR Software & Databases

BR Software to Create BR Data



SpaceCap
Capture

Capture AP4 data into SNS V8 formatted database



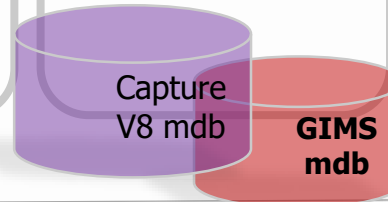
GIMS
Graphics

Capture AP4 graphical data into GIMS mdb



SpaceVal
Validation

Validate AP4 data and check for presence of required AP4 graphical data



SpaceCom
Comments

Capture requests for coordination

BR Software to Query BR Data



SpaceQry

Query & Extract

Query
satellite and
Earth stations
in the space
Services from
-srsXXXX.mdb
-ificXXXX.mdb
-SPS_ALL.mdb
-AP30B.mdb

SNS Online

Query & Extract

Query
satellite and
Earth stations
in the space
Services from
-SNS master
database

SpacePub

Publications

Print
satellite and
Earth stations
in the space
Services from
-srsXXXX.mdb
-ificXXXX.mdb
-SPS_ALL.mdb
-AP30B.mdb

GIMS

Graphics

Query
for graphical
data in the
GIMS database

BR Software to Run Tech Exams



GIBC

Graphical Interface for Batch Calculations

PFD
S/T

AP7

AP8

PFD
Ap30/30A

AP30B

SPS

the *space plans* software (formerly “MSPACEg”)

Determination of the coordination requirements for the Plans for space networks in Appendices 30, 30A of the Radio Regulations

Space Application Manager



Windows Start menu search results for 'SAM v8':

- Search filters: All, Web
- Best match:
- SAM v8** (with green running person icon) - Desktop app
- Apps

Screenshot of the ITU-BR Space Applications Manager v8.0.0 (SNS V8) application window:

- Window title: ITU-BR Space Applications Manager v8.0.0 (SNS V8)
- Navigation sidebar:
 - Favorites
 - BR Soft
 - BR Web
- Main application area (grid of tools):
 - BR-SIS SpaceQry
 - BR-SIS SRSCovert
 - SpaceVal (with green checkmark)
 - GIBBC
 - GIMS 11 BETA
 - IDWM
 - SPS
 - SpaceCap (with green checkmark)
 - SpaceCom (with green checkmark)
 - SpacePub (with green checkmark)
- Footer: ITU International Telecommunication Union - Committed to connecting the world

BR Space Software



Why?

- Purpose of BR Software

What's in it for you?

- How can BR Software help you?

Where to get it?

- From where to download BR Software?

Coming soon...

- The future of BR Software & Databases

Latest BR Software Version



Where to check for latest versions



Download from the BR web site

<http://www.itu.int/ITU-R/software/space/index.html>



From the IFIC DVD



Automatic Update

Installation requires administrator privileges

BR Software Version



- Each World Radio Communication Conference introduces new resolutions and changes to the Radio Regulations
 - **Decisions taken at WRC 2012: v7**
 - New tables to support the new due diligence procedure for 21-22.4 GHz (RES552)
 - **Decisions taken at WRC 2015: v8**
 - New AP4 data elements in existing tables
 - **Database design improvements as part of v8:**
 - Improve orbit-related tables for better support of non-GSO notifications
 - New tables for detailed results (all_aff_ntw, grp_aff_rec)

BR Space Software



Why?

- Purpose of BR Software

What's in it for you?

- How can BR Software help you?

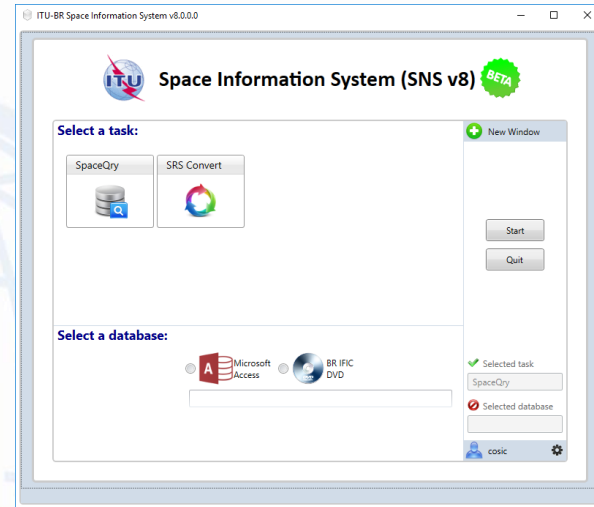
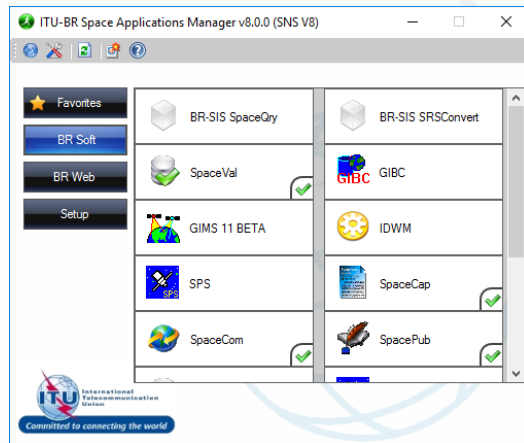
Where to get it?

- From where to download BR Software?

Coming soon...

- The future of BR Software & Databases

Future of BR Space Software



Current BR Space Network System



- Classical desktop applications
- Different user interfaces
- Separation of desktop applications and web services

Future BR Space Information System

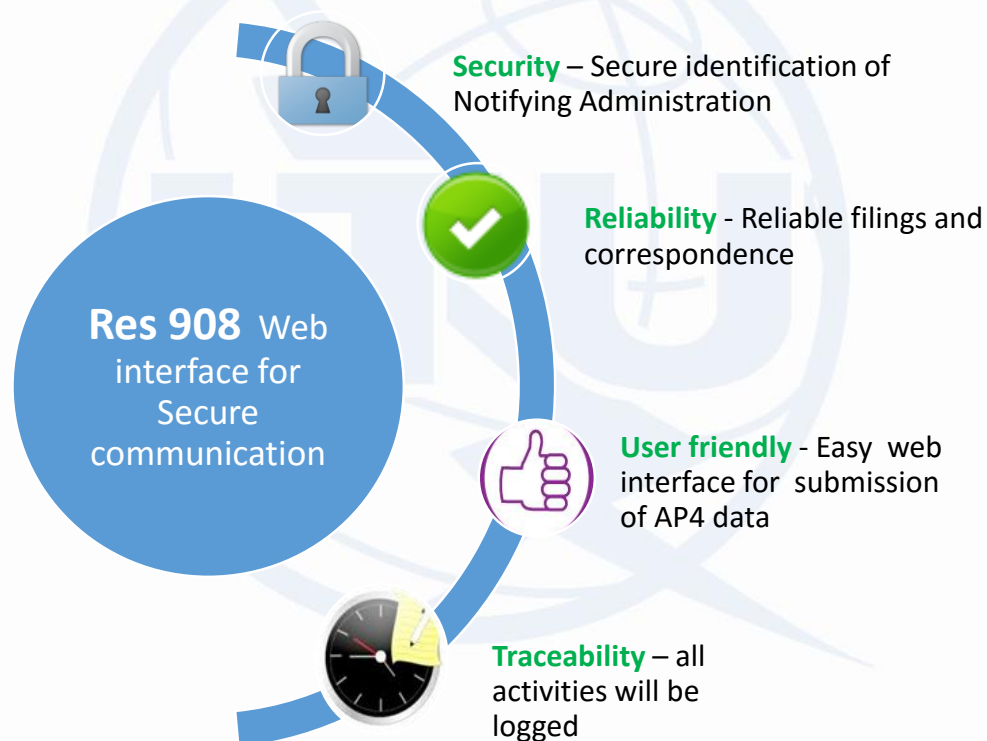


- Single user interface
- Consistent look and feel
- Rich user experience
- Gain in terms of training and productivity
- Seamless integration with existing and future online services and applications

Future of BR Space Software



- Resolution 908 (Rev. WRC-15): Electronic submission and publication of satellite network filings



- Impacts: SpaceVal, SpaceCap, SpaceQuery, SpacePub

Future of BR Space Software



BETA GIBC SNS V8 - Graphical Interface for Batch Calc... - [] [X]

Appendix 30B | Appendix 30 30A | Power Control | Tools / Options
Appendix 8 | PFD (terrestrial serv.) | PFD (space serv.) | Appendix 7

[Start]

Network: []

Examination Data

Ap8 Case I/II: [Case I&II] Findings Level: [Group]
 Use Polarization Output Level: [Level 1]

Existing

Check Against Existing Administration ID: []
Transaction ID: [] Sat. Network Symbol: []

Date

Date Year - Month - Day [1990] - [01] - [01]

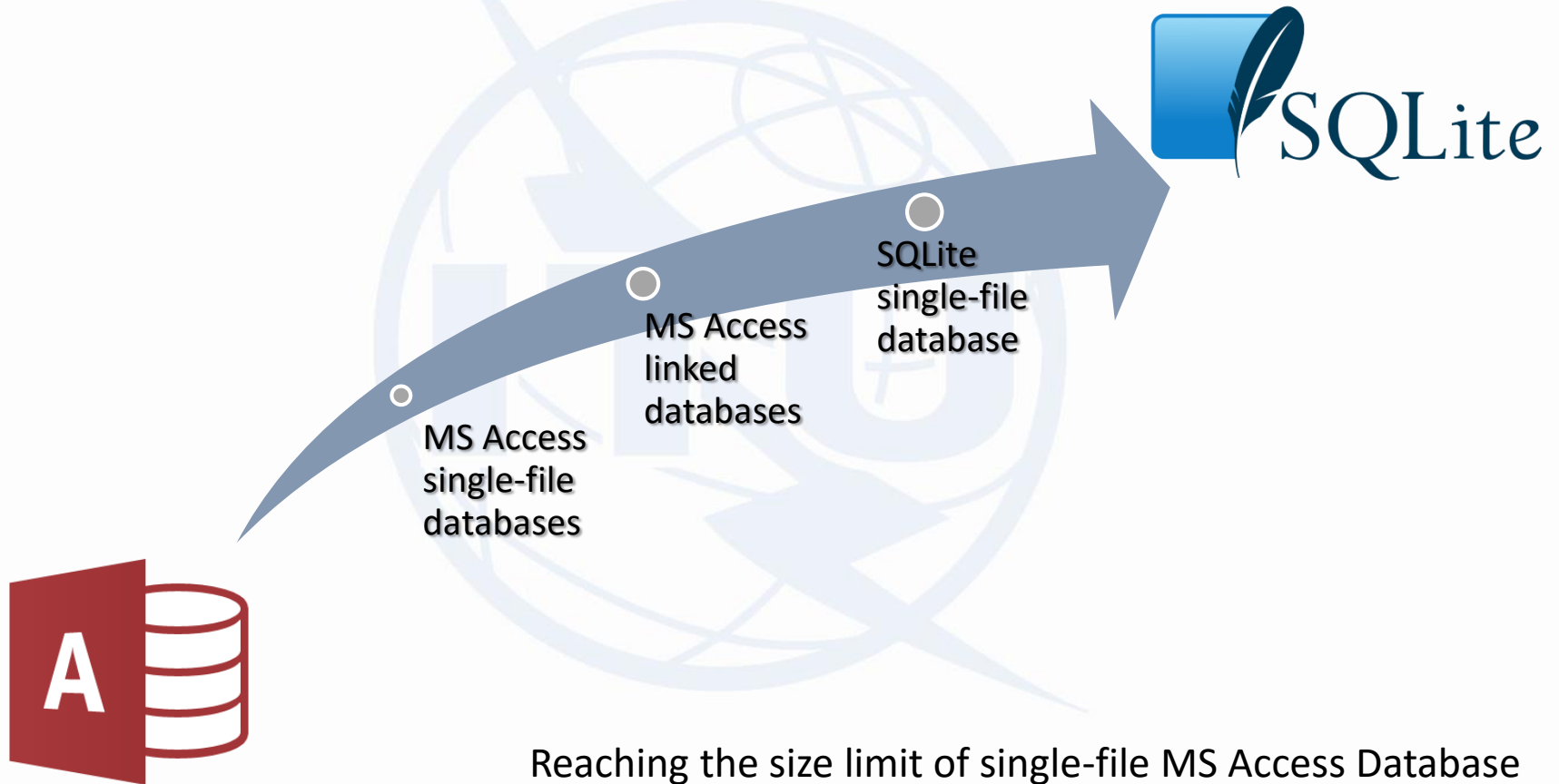
Files Path

C:\BR_TEX_RESULTS\AP8\ [Open Folder]

[EXIT] [Help]

- New AP8, PFD (space), PFD (terrestrial) exam software:
 - Migrate to modern technology for easier maintenance
 - Better performance
 - More user-friendly output
 - Benefit from multi-core processors
 - Detailed results

Future of BR Space Databases



Reaching the size limit of single-file MS Access Database



Thank you for your attention

**Questions, suggestions, comments:
brsas@itu.int**
